

ePpaylink Guidebook

THAIEPAY

The guidebook for connecting with THAIEPAY system,
the online payment gateway system which is trusted by many stores.
(English Version)

(Connection
Guidebook)

ePaylink Connection Guidebook

EPAYLINK system is a simple Online Payment Gateway System created as a group of webpage for you to connect with directly. Buyers only have to enter their credit card details and you only need to send details of their transactions (parameters) such as prices and ID numbers of products. EPAYLINK simplifies payments between your website and buyers.

Parameters that are used for connecting with our EPAYLINK system consist of 2 types of parameter, "Requested Parameter" which need to be set every time in order to connect with the EPAYLINK system and "Additional Parameter", which is optional, not obligatory. They can be selected to set for your payment system to operate with more convenience. The details of both parameters are indicated below:

Required Parameters

PARAMETER	DATA TYPE	MAXIMUM LENGTH	DETAILS
merchantid	integer	8	Merchant ID No.
refno	integer	10	Reference No.
customeremail	character	100	E-mail of customer
productdetail	character	255	Details of product
total	integer	Not over 9,999,999	Total amount
lang (optional)	character	2	Language
cc (optional)	character	2	Currency unit
postbackurl	character	500	URL for posting parameters
returnurl	character	500	URL for returning to merchant website



Main Parameters

You need to send the main 5 parameter values as indicated below by POST Method to this URL

<https://www.thaiepay.com/epaylink/payment.aspx>

1. **Merchantid** is the Merchant ID Number of your website that was sent to you by e-mail on the date of completed registration. The data type of this parameter is integer, with a maximum length of 8 integers.
2. **Refno** is the Reference Number that you will use for referring a purchase item through EPAYLINK System. Refno must be unique for each transaction, not identical, because identical refno will cause duplication to the purchase item. The data type of this parameter is integer, with a maximum length of 10 integers.
3. **Customeremail** is an e e-mail address of a customer. This e-mail is used for confirmation when an online payment has been completed. The data type of this parameter is character, with a maximum length no greater 100 characters.
4. **Productdetail** is a brief description of a product to inform buyers what they previously paid for. The data type of this parameter is character, with a maximum length not over 255 characters.
5. **Total** is the total amount for all product purchases. This data type uses integers and can also be sent in decimal point such as 199.50

Additional Parameters

The Additional Parameters are optional, which means you can choose to use them if you want. These parameters are added in connecting with our payment gateway for more efficient use. They comprise 4 additional parameters as follows:

1. lang (language). This parameter is used in setting up the language for the webpage; Thai or English. Ordinarily, the webpage will display the value that you already set in the control panel. However, if you send **lang** parameter, the display will be changed immediately.

lang = "TH" displays in Thai or lang = "EN" displays in English

The reason to create this parameter is because some websites have both Thai and English version. Therefore, this parameter was made for your convenience. You are allowed to choose the language that you want.

2. cc (currency code). This parameter is used for setting the currency unit (in accordance with item 1 above). You can set the currency unit in the control panel system in advance. However, if the different "cc" parameter is sent, the system will change the currency for your website automatically.



cc = "00" currency unit is Baht,

cc = "01" currency unit is USD,

cc = "02" currency unit is Yen,

cc = "03" currency unit is Singapore Dollar

cc = "04" currency unit is Hong Kong Dollar,

cc = "05" currency unit is Euro Dollar,

cc = "06" currency unit is GBP

cc = "07" currency unit is Australian Dollar,

cc = "08" currency unit is Swiss Franc

The reason to create this parameter is the same with item 1. This is because some websites have products that use various currency units. Therefore this parameter is useful for you to adjust the currency unit.

3. postbackurl is the parameter which is created to send the payment value back to the merchant's payment system itself. The postbackurl will be working after you have sent all requested parameters and had the postbackurl turned on, when connecting with ePaylink system. When your customer has confirmed a payment and paid by his credit card, after this payment process was complete, Thaipay system will then send the payment value back to your system as a payment result, referring to the postbackurl value that was previously assigned.

In case that you want to use this additional parameter, you need to create a URL for sending parameters back to your payment system first. Then send the URL which has been created along with parameters that will be posted for THAIEPAY system i.e

- <http://www.yourdomain.com/complete.php?rid=0003444>

- <http://www.yourdomain.com/complete.php?rid=0003444?rid2=0003445>

4. returnurl is the parameter for you to return to URL that have been set after a payment was complete. After a payment has been finished, the webpage will show "Complete" as the payment result and will then show "Waiting Status" for 5 seconds, and the webpage will display the URL that has been set. If you want to use returnurl parameter, you need to set a returnurl and send it to THAIEPAY system.



Example of HTML Code

This is an example of HTML Code that is created to test "sending parameters" to the EPAYLINK System. If you would like to use this code, you should enter your merchantid and customeremail parameters, before you run the test.

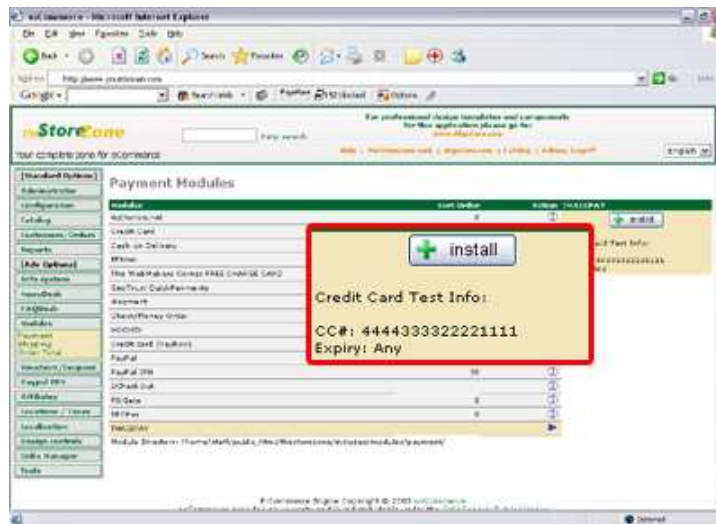
```
<html><head><title>EPAYLINK Testing</title></head>
<body bgcolor="#FFFFFF" text="#000000">
<form method="post"
action="https://www.thaiepay.com/epaylink/payment.aspx">
  <input type="hidden" name="refno" value="99999">
  <input type="hidden" name="merchantid" value="">
  <input type="hidden" name="customeremail" value="">
  <input type="hidden" name="productdetail" value="Testing Product">
  <input type="hidden" name="total" value="400">
  <br>
  <input type="submit" name="Submit" value="Comfirm Order">
</form></body></html>
```

THAIEPAY has developed "Modules" for connecting payment system of THAIEPAY with the E-Commerce system of OsCommerce allowing you to install the OsCommerce system easily. "OsCommerce Connecting Module" is downloadable for free on our website www.thaiepay.com

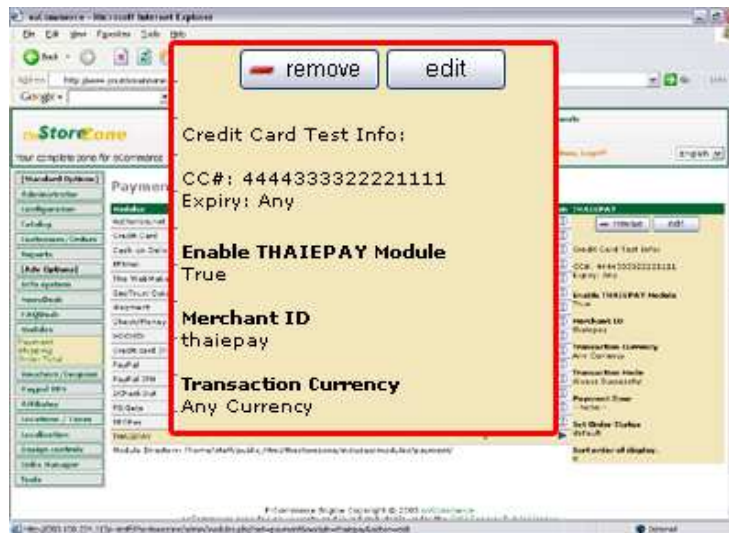


OsCommerce Module Installation

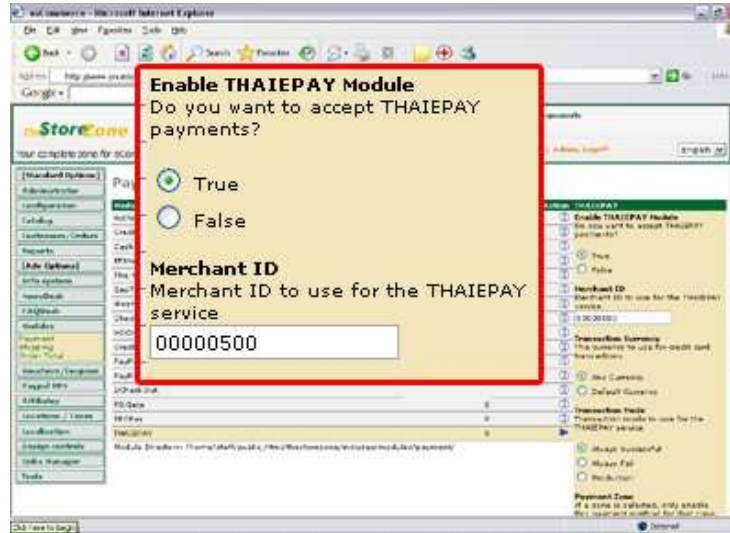
1. Copy the OsCommerce program and install in the required folder, and then make a modification in the Administrator. After that you can click the "Install" button.



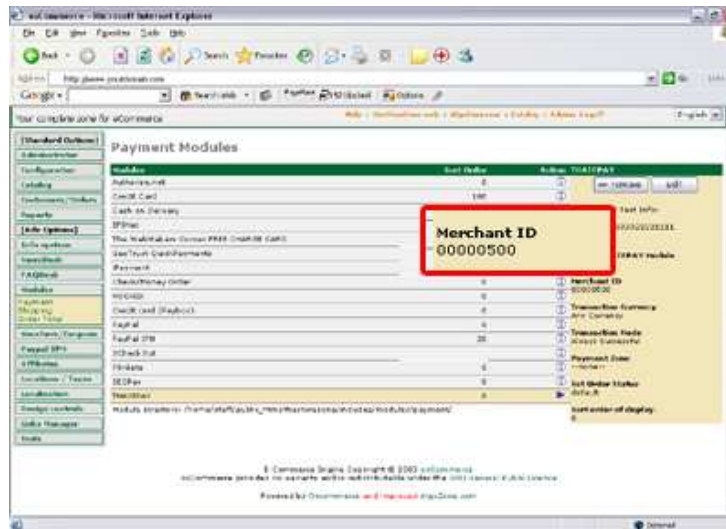
2. The picture below is showing the initial parameter values after installation (all parameters must be precise).



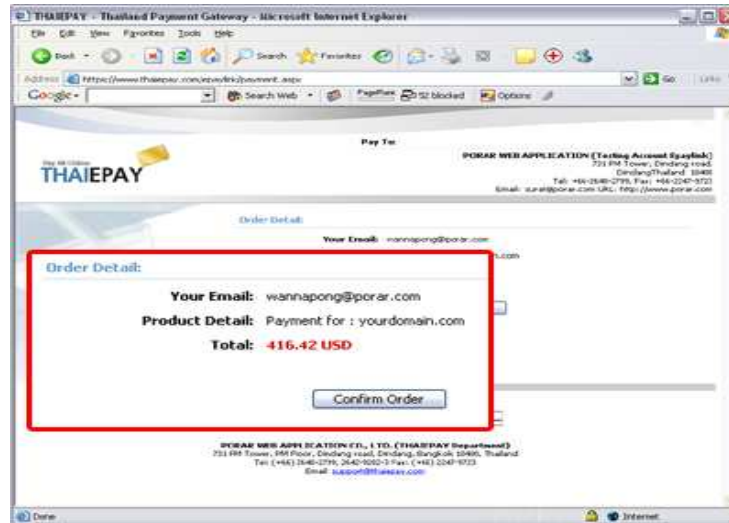
- Indicate the merchant ID parameter. As in the picture below, the merchant ID parameter is set to be 00000500 and then enable THAIEPAY Module by selecting "True".



- When you have already installed the OsCommerce program, the system will display the installation status of each parameter, for example, the merchant ID parameter as below.



- You can test the connection by using OsCommerce. When clicking the "Check out" button to make a payment, the system will display payment methods including THAIEPAY. Select THAIEPAY and click to confirm the payment. And you can make OsCommerce compatible with THAIEPAY. Now, your customer can access THAIEPAY system and make a payment for their purchase.



Test the Connection

For THAIEPAY payment gateway system, we also provide the demo credit card used for testing the system. This demo card allows you to test sending those parameters and see how THAIEPAY system works. You can fill all details of this demo credit card and then click "Submit" button. The system will process and verify the card data and finally show the payment result within 2-3 minutes.

Credit Card Number: 4311 1510 0999 9993 (Available for Demo Account Only)
CVV: 180
Expiry Data: 12/20
Credit Card Issuer: United Overseas Bank (Thai) Public Company Limited

